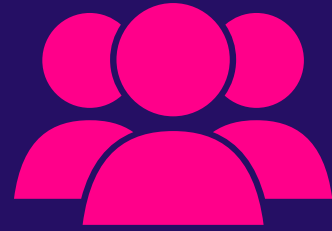


A large three-masted sailing ship, the Cutty Sark, is docked at a quay. The ship's hull is dark with gold lettering. A modern glass-walled building is in the foreground, and several people are walking on the quay.

**CUTTY SARK**



---

# GROUP LEADER PROGRAMME

---

**UNIVERSITY OF  
GREENWICH  
LONDON**

By joining our programme  
at Greenwich as a Group Leader, you  
will get:

- Afternoon tea in the Cutty Sark
- Cheese and Wine Night
- Historical Campus Tour
- Guided tour of the Painted Hall
- Academic Presentation

The interior of the Painted Hall, featuring a large, ornate ceiling with a fresco depicting a battle scene. The hall has high ceilings, large windows, and red upholstered benches.

**GUIDED TOUR OF THE  
PAINTED HALL**

**CAMPUS TOUR**

