



College building



Bradfield College – Spring

★ Highlights

- Boarding school en-suite accommodation
- Amazing food in a 19th century dining hall
- English lessons and competitions against international students
- 3 full day excursions per week

9-17
YRS

Groups &
Individuals

200
max beds
per week



Dates*

Turn 1: 04 APR - 11 APR

Turn 2: 11 APR - 18 APR

*1 or 2 week programmes available.



Campus

Bradfield College
Bradfield
Berkshire
RG7 6AU
www.bradfieldcollege.org.uk

For more photos visit our instagram:

[oiegradfield](https://www.instagram.com/oiegradfield)

For more information please contact your regional manager or email
oijuniorprogrammes@oxfordinternational.com or visit oxfordinternationaljuniors.com



Location

Airports:

- 40 minutes from London Heathrow
- 1 hour from Gatwick airport

Nearest town: Reading (25 minutes)

Bus: 80 minutes to central London



Accommodation

- Modern boarding house accommodation with multi-bed en-suite bedrooms
- Fantastic common rooms with great facilities to relax and unwind in the evenings
- Boarding houses located in centre of Bradfield village less than a 10 minute walk from the dining hall and classrooms



Programme

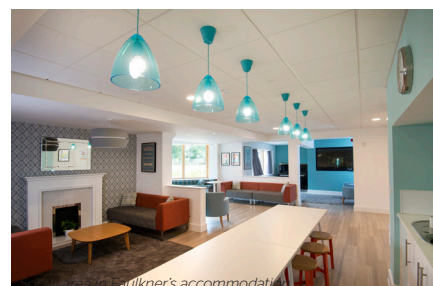
- 15 hours of general English lessons per week
- Return transfers from London airports
- 1 week course excursions: Two extended days to London with one entrance to London Eye and one full day to Oxford with entrance to Christ Church College
- World English Experience (WEE) competitions against international schools including Mystery Challenge, WEE Spotlight, WEE Brain Puzzles and WEE Playoff



Boarding house



Bedroom



Julian's accommodation



Sample Programme*

Date	Days	Morning	Afternoon	Evening
04 Apr	Thu	Arrivals	Arrivals	Campus tour and ice-breaker activities
05 Apr	Fri	1 week - Extended London 2 week - Full day to Windsor	1 week - Extended London 2 week - Entrance to Windsor Castle and walking tour	1 week - Extended London 2 week - Opening Ceremony and Welcome Disco
06 Apr	Sat	Competition 1 - Country Spotlight	Testing and Lesson 1	Onsite Activities Academic Elective - Drama Academic Elective - Science
07 Apr	Sun	Full day to Oxford	Walking tour and entrance to Christ Church College	Talent show
08 Apr	Mon	Lesson 2	Lesson 3	Onsite Activities Academic Elective - Drama Academic Elective - Science
09 Apr	Tue	Extended full day excursion to London	Entrance to the London Eye	Evening in London
10 Apr	Wed	Lesson 4	Lesson 5 - Project Lesson	Competition 2 - Mystery Challenge
11 Apr	Thu	Onsite Activities	Multi-Station Team Building and Leadership Challenge	International Night
12 Apr	Fri	Extended full day excursion to London	Politics and Royalty walking tour	Evening in London
13 Apr	Sat	Lesson 6	Onsite Activities Academic Elective - Drama Academic Elective - Science	Competition 3 - Project Presentation
14 Apr	Sun	Lesson 7	Lesson 8	Onsite Activities Academic Elective - Drama Academic Elective - Science
15 Apr	Mon	Extended full day excursion to London	1 week - London Eye 2 week - Extended Full day excursion to London	Evening in London
16 Apr	Tue	Lesson 9 and Trinity Examination	Lesson 10 - Project Lesson	Competition 4 - Big Brain Challenge
17 Apr	Wed	1 week - Oxford 2 week - Excursion choice (Thorpe Park/Shakespeare's Birthplace/ Harry Potter)	1 week - Oxford with entrance to Christ Church College 2 week - Excursion choice (Thorpe Park/Shakespeare's Birthplace/ Harry Potter)	Closing Ceremony and Farewell Neon Disco
18 Apr	Thu	Departures	Departures	Departures

*Sample programme as of August 2018.