



English & Football with Tottenham Hotspur – Egham



10-17
years

Individuals

100
max beds
per week

Highlights

- Lessons and accommodation within the world-famous Founder's Building, dating back to 1886
- 12 hours of football coaching per week with FA and UEFA qualified football coaches from Tottenham Hotspur
- Tottenham Hotspur replica football kit sent on return home

Dates

Turn 1: 04 July – 18 July

Turn 2: 18 July – 01 August

Location

Royal Holloway – University of London,
Egham Hall, Egham, Surrey, TW20 0EX

www.rhul.ac.uk

Transport

Airports:

→ Heathrow: 20min

→ Gatwick: 45min

Individuals are met at the airport by an Activity Leader who will escort them back to the campus.

Nearest town: Egham

Rail: 40min to central London

Travelcards: Included on excursions to London

Accommodation

- Single or twin standard bedrooms in the iconic Founder's Building.
- Wi-Fi is available in the accommodation.

Academics

Maximum class size: 18

English levels: Elementary - Proficiency (programme can be adjusted to lower English levels). Young learners' syllabus available for students aged 11 or younger*

*minimum 12 students required

Additional options available**:

- Trinity GESE exam
- World of Work (ASL) syllabus: Available for students age 14+ with minimum English level B1

** (Supplements and minimum numbers may apply)

In partnership
with:



📷 Students playing football



📷 Sports facilities



📷 Student playing football



**For more images visit
our Instagram:**
[oiegyptalholloway](https://www.instagram.com/oiegyptalholloway)

For more information:

Please contact your regional manager or email:

oijuniorprogrammes@oxfordinternational.com

or visit:

[oxfordinternationaljuniors.com/
centres/english-and-football-
with-tottenham-hotspur](https://oxfordinternationaljuniors.com/centres/english-and-football-with-tottenham-hotspur)



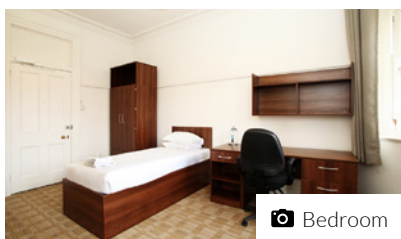
*Oxford International Junior Programmes understands that occasionally slightly younger/older siblings or friends may wish to come in a group. Oxford International Junior Programmes reserves the right to accept students who are slightly younger or older than the advertised minimum/maximum age. These exceptional requests must be approved by our admissions team in advance. Appropriate welfare and safeguarding provisions will apply.



English & Football with Tottenham Hotspur – Egham



📷 Founder's Building



📷 Bedroom



📷 Classroom learning

Meals

Breakfast: 07:00 - 08:45 - Continental with tea, coffee and fruit juice. Full English breakfast on Sunday with tea, coffee and fruit juice.

Lunch: 12:30 - 13:45 - Hot lunch with two choices/vegetarian option and salad bar/dessert.

Dinner: 18:00 - 20:00 - Hot dinner with two choices/vegetarian option and salad bar/dessert.

Facilities

Sports: Sports include badminton, basketball and table tennis. The sports hall is used as part of the activity programme and must be supervised by an Activity Leader.

Other: A stunning picture gallery and historic chapel are housed within the world-famous Founder's Building. Social spaces are available within the

Sample Programme*

	Morning	Afternoon	Evening
Day 1	Arrivals	Arrivals	Campus tour and ice-breaker activities
Day 2	Placement Test and Lesson 1	Football Coaching	On-site Activities
Day 3	Lesson 2	Football Coaching	On-site Activities
Day 4	Football Coaching	Half day to Windsor and entrance to Windsor Castle	Welcome Disco
Day 5	Lesson 3	Full day excursion to London with entrance to Tottenham Hotspur Stadium**	Sunset Boat Disco on the River Thames
Day 6	Football Coaching	Lesson 4	Football Seminar
Day 7	Lesson 5	Lesson 6	Themed Disco
Day 8	Football Coaching	Football Coaching	International Evening
Day 9	Lesson 7	Lesson 8	On-site Activities
Day 10	Full day excursion to Brighton by coach	Unlimited Rides Wristband to use at Brighton Pier	Karaoke/Lip Sync Battle
Day 11	Full day excursion to London with Politics and Royalty walking tour	Entrance to Wembley Stadium**	Football Seminar
Day 12	Football Coaching	Lesson 9	Talent Show
Day 13	Football Coaching	Lesson 10	Farewell Disco
Day 14	Full day excursion to Thorpe Park	Full day excursion to Thorpe Park	On-site Activities
Day 15	Departures	Departures	Departures

*Activities are sample only, can change depending on the length of the programme **Subject to availability



Students Union such as Tommy's Bar.

Computer Access

Students are issued with a Wi-Fi code on arrival. There is also a computer centre on site, which is available to Group Leaders all day, and to students as a designated evening activity.

Laundry

Located in The Hub main reception, and open until late each night. Washing powder can be purchased in the laundry room. Students must be accompanied by a member or staff. Bed linen will be washed once a week by the University. Refer to the Welfare Manager for exact details. All students should bring towels and toiletries.

Security

The university has a 24-hour on-site security team, who maintain a patrol. There is also campus-wide CCTV. All rooms have secure keycard entry. No safes in the bedrooms. The Centre Manager has a safe in their office, and this can be used by students to store money/passports securely. Damage deposits of £25 or €30 will be collected.

Health Care

Hospital: St. Peter's Hospital, Guildford Road, Chertsey, KT16 0PJ
Doctors' Surgery: based within the University itself, as there is a medical centre within Founder's Building. This is open 09:00 - 17:00 Monday to Friday.
Pharmacy: Boots Chemist, Egham High Street, Egham