



# University of Brighton – Eastbourne

**8-17**  
years

**Groups & Individuals**

**160**  
max beds  
per week

## Highlights

- Modern campus with en-suite bedrooms, only a 10 minute walk to the beach
- Extended days to London and Brighton with late return and an additional full day to London
- Weekly ice cream van and BBQ included as dinner

## Dates

**Turn 1:** 04 July – 18 July

**Turn 2:** 18 July – 01 August

**Turn 3:** 01 August – 15 August

## Location

University of Brighton, Eastbourne Campus, Welkin Residences, 28 Saffrons Park, Eastbourne, BN20 7UX  
[www.brighton.ac.uk](http://www.brighton.ac.uk)

## Transport

### Airports:

→ Heathrow: 2hrs

→ Gatwick: 1hr

Groups/individuals are met at the airport by an Activity Leader who will welcome you and escort you to the campus.

**Nearest town:** Eastbourne

**Rail:** 90min to central London

## Accommodation

- Recently refurbished accommodation.
- Single en-suite bedrooms in apartments of 5 to 6 bedrooms.
- Shared kitchen/lounge as common area in each apartment.
- Closed courtyard garden inside accommodation.

## Academics

**Maximum class size:** 18

English levels: Elementary - Proficiency (programme can be adjusted to lower English levels). Young learners' syllabus available for students aged 11 or younger\*

\*minimum 12 students required

### Additional options available\*\*:

- Trinity GESE exam
- World of Work (ASL) syllabus: Available for students age 14+ with minimum English level B1

\*\* (Supplements and minimum numbers may apply)



Eastbourne pier



University building



Sports facilities



**For more images visit our Instagram:**  
[oiegeastbourne](https://www.instagram.com/oiegeastbourne)

### For more information:

Please contact your regional manager or email:

[ojunioprogrammes@oxfordinternational.com](mailto:ojunioprogrammes@oxfordinternational.com)

or visit:

[oxfordinternationaljuniors.com/centres/university-of-brighton](http://oxfordinternationaljuniors.com/centres/university-of-brighton)



\*Oxford International Junior Programmes understands that occasionally slightly younger/older siblings or friends may wish to come in a group. Oxford International Junior Programmes reserves the right to accept students who are slightly younger or older than the advertised minimum/maximum age. These exceptional requests must be approved by our admissions team in advance. Appropriate welfare and safeguarding provisions will apply.

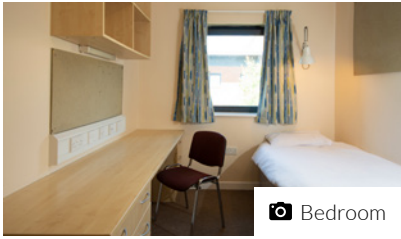




# University of Brighton – Eastbourne



📷 Sports facilities



📷 Bedroom



📷 Classroom learning



## Meals

**Breakfast:** 07:00 - 08:30 - Continental breakfast with cooked breakfast twice a week.

**Lunch:** 12:00 - 12:45 - Choice of two main courses (1 vegetarian), pasta and salad bar, and fresh fruit or yoghurt for dessert.

**Dinner:** 18:00 - 19:30 - Choice of two main courses (1 vegetarian), pasta and salad bar and dessert.

## Facilities

**Sports:** A 25-metre swimming pool, sports hall, gym, artificial outdoor pitch and dance studio.

**Other:** Great social spaces including the university's student union with catering facilities for an outdoor BBQ and ice cream van once a week.

## Computer Access

Queenswood Library and computer rooms available for students to access computers and Wi-Fi across the campus.

## Laundry

Laundry facilities available in the halls of residence using a pre-loaded card. Please ask the Welfare Manager for details. All students should bring towels and toiletries.

## Security

The campus is covered by CCTV and the accommodation reception is manned 24hrs a day by accommodation staff or security personnel. A damage deposit of £25/€30 will be collected on arrival from each student.

## Health Care

**Hospital:** Eastbourne District General Hospital, King's Drive, Eastbourne, BN21 2UD

**Doctors' Surgery:** The Eastbourne Clinic, 21 Grange Rd, Eastbourne, BN21 1DH

**Pharmacy:** Boots Pharmacy - The Crowne Centre, Waitrose, Eastbourne, BN21 1HR

## Sample Programme\*

	Morning	Afternoon	Evening
<b>Day 1</b>	Arrivals	Arrivals	Campus tour and ice-breaker activities
<b>Day 2</b>	Placement Test and Lesson 1	Half Day orientation of Eastbourne	On-site Activities
<b>Day 3</b>	Full day excursion to London by train with Politics and Royalty Tour	Visit to National Gallery with Picadilly Circus and Leicester Square	Welcome Disco
<b>Day 4</b>	Lesson 2	Beachy Head and Seven Sisters Clifftop Walk	On-site Activities
<b>Day 5</b>	Lesson 3	Eastbourne Promenade and Pier	Karaoke/Lip Sync Battle
<b>Day 6</b>	Lesson 4	Eastbourne Instagram Challenge	International Evening
<b>Day 7</b>	Extended full day excursion to London by train	Thameside Walking Tour with free time on the South Bank	Late return to campus by train
<b>Day 8</b>	Lesson 5	Lesson 6	On-site Activities
<b>Day 9</b>	Beach Sports Tournament	Lesson 7	Beach Party Theme Disco
<b>Day 10</b>	Extended full day excursion to Brighton by train	Entrance to BAI360 and Walking Tour	Fish and Chips dinner with a late return to campus by train
<b>Day 11</b>	Eastbourne Beach Games	Lesson 8	Talent Show
<b>Day 12</b>	Half day excursion to Battle Abbey	Lesson 9	On-site Activities
<b>Day 13</b>	Eastbourne academic activity	Lesson 10	On-site Activities
<b>Day 14</b>	Optional Day	Optional Day	Farewell Disco
<b>Day 15</b>	Departures	Departures	Departures

\*Activities are sample only, can change depending on the length of the programme.

