



University of Greenwich – London



10-17
years

Groups

340
max beds
per week

Highlights

- Opportunity to study at a UNESCO World Heritage Site almost 300 years old only 15 minutes from central London
- Full day to Cambridge with entrance to a college and full day to Brighton with entrance to the BAI360
- Weekly travelcard provided for easy access into London

Dates

Turn 1: 04 July – 18 July

Turn 2: 18 July – 01 August

Turn 3: 01 August – 15 August

Location

University of Greenwich, Daniel Defoe Halls, 10 Lovibond Lane, London, SE10 9FY

www2.gre.ac.uk/about/campus/greenwich

Transport

Airports:

→ Heathrow: 1hr 20min

→ Gatwick: 1hr 40min

Groups are met at the airport by an Activity Leader who will welcome you and escort you to the campus.

Local area: Greenwich

Rail: 15min to central London

Travelcards: Weekly zones 1-2 travelcards are included. These allow unlimited travel on the transport network including bus, train, tube, DLR and tram.

Accommodation

- Daniel Defoe residence is next to Greenwich railway and DLR stations.
- Single en-suite or two bedroom apartments.
- Less than 5 minutes' walk from Greenwich town centre and all the facilities this historic area has to offer.
- Canteen and student social space on ground floor of accommodation building.

Academics

Lessons will take place at the Old Royal Naval College, a UNESCO World Heritage site, in the centre of Greenwich.

Maximum class size: 18

English levels: Elementary - Proficiency (programme can be adjusted to lower English levels). Young learners' syllabus available for students aged 11 or younger*

*minimum 12 students required

Additional options available:**

- Trinity GESE exam
- World of Work (ASL) syllabus: Available for students age 14+ with minimum English level B1

** (Supplements and minimum numbers may apply)



📷 Old Royal Naval College



📷 View of London from Greenwich Park



📷 Daniel Defoe building



**For more images
visit our Instagram:**
[oiegreenwichmaritime](https://www.instagram.com/oiegreenwichmaritime)

For more information:

Please contact your regional manager or email:

oijuniorprogrammes@oxfordinternational.com

or visit:

oxfordinternationaljuniors.com/centres/university-of-greenwich-london



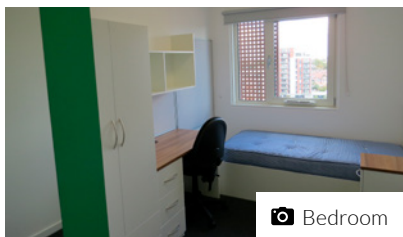
*Oxford International Junior Programmes understands that occasionally slightly younger/older siblings or friends may wish to come in a group. Oxford International Junior Programmes reserves the right to accept students who are slightly younger or older than the advertised minimum/maximum age. These exceptional requests must be approved by our admissions team in advance. Appropriate welfare and safeguarding provisions will apply.



University of Greenwich – London



📷 London Eye



📷 Bedroom



📷 Classroom learning

Meals

Breakfast: 07:45 - 08:45 - Continental breakfast. Hot breakfast once per week.

Lunch: 12:30 - 13:30 - Salad bar, pasta bar, choice of 2 main courses (1 vegetarian), fruit or yoghurt.

Dinner: 18:00 - 19:00 - Pasta bar, salad bar, choice of 2 main courses (1 vegetarian). Cake or fruit for dessert.

Facilities

Sports: Sports are held in the beautiful Greenwich Park, which offers 74 hectares of open green space for outdoor games.

Other: We use a mixture of lecture

Sample Programme*

	Morning	Afternoon	Evening
Day 1	Arrivals	Arrivals	Campus tour and ice-breaker activities
Day 2	Placement Test and Lesson 1	Greenwich with walking tour and entrance to the Royal Observatory	On-site Activities
Day 3	Lesson 2	Visit to Olympic Park (with visit to Westfield)	Welcome Disco
Day 4	Full day to central London by train with Politics and Royalty walking tour	Visit to the National Gallery and shopping Covent Garden	On-site Activities
Day 5	Entrance to British Museum	Lesson 3	On-site Activities
Day 6	Lesson 4	Lesson 5	Thameside walking tour by night
Day 7	Full day excursion to Cambridge by coach	Walking tour of city with entrance to a Cambridge college	On-site Activities
Day 8	Lesson 6	Lesson 7	Late night shopping at O2 outlet mall
Day 9	Full day excursion to Brighton with entrance to BAI360	Full day excursion to Brighton with entrance to BAI360	On-site Activities
Day 10	Lesson 8	Visit to Hyde Park including the Serpentine and the Princess Diana Memorial Fountain	Karaoke/Lip Sync Battle
Day 11	Visit to TATE Modern with views of St Paul's Cathedral	City Cruise along the River Thames to/from campus	On-site Activities
Day 12	Half day to Camden with walking tour and visit to Regents Park	Lesson 9	West End walking tour by night
Day 13	Half day to central London with visit to Kensington Museums	Lesson 10	Disco
Day 14	Optional Excursion	Optional Excursion	On-site Activities
Day 15	Departures	Departures	Departures

*Activities are sample only, can change depending on the length of the programme.



theatres, classrooms and the Students Union on the Lower Deck within the Dreadnought building.

Computer Access

Free Wi-Fi is provided in the accommodation. Access to the internet on campus is via The Cloud.

Laundry

There are card-operated self-service launderettes in Daniel Defoe. Cards can be bought in the launderette and topped up online. All students should bring towels and toiletries.

Security

Reception is staffed 24-hours a day. Access is by swipe card only. There is

also campus wide CCTV. There are no safes in the bedrooms, however there is a safe in the office, and this can be used to store money/passports securely. Damage deposits of £25 or €30 will be collected.

Health Care

Hospital: Lewisham Hospital Accident and Emergency Lewisham High St, SE13 6LH

Doctors' Surgery: NHS Walk in centre, Waldron Health centre, Amersham Vale, SE14 6LD

Pharmacy: Duncans Pharmacy, 193-195 Greenwich High Rd, London, SE10 8JA

