



University of Surrey – Guildford

10-17
years

Groups

400
max beds
per week

Highlights

- Closed campus within walking distance of Guildford town
- Four full day excursions including Oxford, Portsmouth and London (with one late return)
- Geography and drama workshops available during afternoon and evening activities

Dates

Turn 1: 04 July – 18 July

Turn 2: 18 July – 01 August

Location

University of Surrey, Stag Hill Campus, Guildford, Surrey, GU2 7XH
www.surrey.ac.uk

Transport

Airports:

→ Heathrow: 45min

→ Gatwick: 45min

Groups are met at the airport by an Activity Leader who will welcome you and escort you to the campus.

Nearest town: Guildford

Rail: 40min to central London

Travelcards: Included on London excursions

Accommodation

- Single rooms in standard accommodation in the centre of campus with shared bathroom facilities.
- Bathroom to Bedroom ratio 1:4.
- Accommodation is configured into flats/levels of between 10 and 14 rooms.
- Most accommodation blocks have a shared kitchen facility where students can relax in the evening.

Academics

Maximum class size: 18

English levels: Elementary - Proficiency (programme can be adjusted to lower English levels). Young learners' syllabus available for students aged 11 or younger*

*minimum 12 students required

Additional options available**:

- Trinity GESE exam
- World of Work (ASL) syllabus: Available for students age 14+ with minimum English level B1
- NEW! Free Science workshops by university Physics department
- Free Geography and drama workshops during on-site activities

** (Supplements and minimum numbers may apply)



📷 Students socialising



📷 University campus



📷 Guildford Castle



**For more images
visit our Instagram:
[oieguildford](https://www.instagram.com/oieguildford)**

For more information:

Please contact your regional manager or email:

oijuniorprogrammes@oxfordinternational.com

or visit:

oxfordinternationaljuniors.com/centres/university-of-surrey



*Oxford International Junior Programmes understands that occasionally slightly younger/older siblings or friends may wish to come in a group. Oxford International Junior Programmes reserves the right to accept students who are slightly younger or older than the advertised minimum/maximum age. These exceptional requests must be approved by our admissions team in advance. Appropriate welfare and safeguarding provisions will apply.

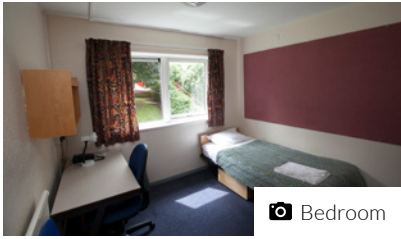




University of Surrey – Guildford



On-site café



Bedroom



Classroom learning

Meals

Breakfast: 07:00 - 08:45 - Continental breakfast with cooked breakfast once per week.

Lunch: 12:30 - 13:45 - Two choice hot lunch with salad bar, bread and fruit.

Dinner: 18:00 - 20:00 - Two choice hot dinner with salad bar, bread and fruit.

Facilities

Sports: The Main Hall is reserved for indoor sports and the playing field can be used for all recreational activities. There is a gym for group leaders at the University of Surrey's Manor Park campus (15 min walk) where you can enrol for a small fee.

Other: The University is set within a safe closed campus environment perfect for socialising and enjoying



the large shop and Starbucks facilities on site. There are also large common areas within most of the accommodation buildings.

Computer Access

There are no computer centres on site but access to Wi-Fi is available via cloud. Wi-Fi can be accessed across the whole campus with the exception of the accommodation.

Laundry

Laundry facilities are available on site from 08:00 - 22:30. The washers and dryers are operated by a laundry card rather than coins. To top up the laundry card you must register online and add credit. Bed linen will be washed once a week by the University laundry. The University will provide one towel per student on arrival.

Security

Reception is staffed 24 hours a day. Access is by swipe card only. There is also campus wide CCTV. There are no safes in the bedrooms, however there is a safe in the office, and this can be used to store money/passports securely. Damage deposits of £25 or €30 will be collected.

Health Care

Hospital: Royal Surrey County Hospital, Egerton Road, GU2 7XX
Doctors' Surgery: Woodbridge Hill Surgery, 1 Deerbarn Road, GU2 8YB
Pharmacy: Tesco Pharmacy, Ashenden Rd, GU2 7UN

Sample Programme*

	Morning	Afternoon	Evening
Day 1	Arrivals	Arrivals	Campus tour and ice-breaker activities
Day 2	Placement Test and Lesson 1	Local orientation of Guildford and Guildford Photo Challenge	On-site Activities
Day 3	Full day excursion to London by train with Politics and Royalty walking tour	Entrance to National Gallery and shopping in central London	Welcome Disco
Day 4	Lesson 2	On-site Activities	On-site Activities
Day 5	Lesson 3	Lesson 4	Karaoke/Lip Sync Battle
Day 6	Full day excursion to Oxford with walking tour of the city	Entrance to an Oxford College and free time to explore the city centre	On-site Activities
Day 7	Lesson 5	On-site Activities	International Evening
Day 8	Half day to Guildford with academic challenge	Lesson 6	On-site Activities
Day 9	On-site Activities	Lesson 7	On-site Activities
Day 10	Full day to Windsor by coach	Hop-on hop-off bus tour, visit Windsor and Eton	On-site Activities
Day 11	On-site Activities	Lesson 8	Talent Show
Day 12	Lesson 9	Lesson 10	On-site Activities
Day 13	Extended full day to London by train with Thameside Walking Tour	Visit to British Museum and shopping on Oxford Street	Late return to campus
Day 14	Optional Excursion	Optional Excursion	Disco
Day 15	Departures	Departures	Departures

*Activities are sample only, can change depending on the length of the programme.

