



# English & Football with Tottenham Hotspur – at Royal Holloway



**10-17**  
years\*

**Individuals**

**100**  
max beds  
per week

## Highlights

- Lessons and accommodation within the world-famous Founder's Building, dating back to 1886
- 12 hours of football coaching per week with FA and UEFA qualified football coaches from Tottenham Hotspur
- Tottenham Hotspur replica football kit sent on return home

## Dates

**Turn 1:** 03 July – 17 July

**Turn 2:** 17 July – 31 July

## Location

Royal Holloway – University of London, Egham Hall, Egham, Surrey, TW20 0EX

[www.rhul.ac.uk](http://www.rhul.ac.uk)

## Transport

### Airports:

→ Heathrow: 20min

→ Gatwick: 45min

Individuals are met at the airport by an Activity Leader who will escort them back to the campus.

**Nearest town:** Egham

**Rail:** 40min to central London

**Travelcards:** Included on excursions to London

## Accommodation

- Single or twin standard bedrooms in the iconic Founder's Building.
- Wi-Fi is available in the accommodation.

## Academics

**Maximum class size:** 18

English levels: Elementary - Proficiency (programme can be adjusted to lower English levels). Young learners' syllabus available for students aged 11 or younger\*

\*minimum 12 students required

## Additional options available\*\*:

- Trinity GESE exam
- World of Work (PCTO ex ASL in Italy) syllabus: Available for students age 14+ with minimum English level B1

\*\* (Supplements and minimum numbers may apply)

In partnership with:



📷 Students playing football



📷 Sports facilities



📷 Student playing football



**For more images visit our Instagram:**  
[oijuniorprogrammes](https://www.instagram.com/oijuniorprogrammes)

## For more information:

Please contact your regional manager or email:

[oijuniorprogrammes@oxfordinternational.com](mailto:oijuniorprogrammes@oxfordinternational.com)

or visit:

[oxfordinternationaljuniors.com/centres/english-and-football-with-tottenham-hotspur](https://www.oxfordinternationaljuniors.com/centres/english-and-football-with-tottenham-hotspur)



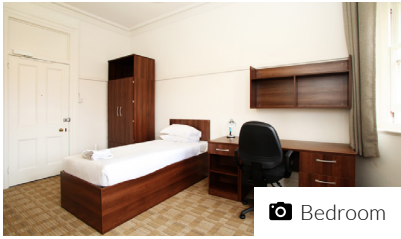
\*Oxford International Junior Programmes understands that occasionally slightly younger/older siblings or friends may wish to come in a group. Oxford International Junior Programmes reserves the right to accept students who are slightly younger or older than the advertised minimum/maximum age. These exceptional requests must be approved by our admissions team in advance. Appropriate welfare and safeguarding provisions will apply.



# English & Football with Tottenham Hotspur – at Royal Holloway



📷 Founder's Building



📷 Bedroom



📷 Classroom learning

## Meals

**Breakfast:** 07:00 - 08:45 - Continental with tea, coffee and fruit juice. Full English breakfast on Sunday with tea, coffee and fruit juice.

**Lunch:** 12:30 - 13:45 - Hot lunch with two choices/vegetarian option and salad bar/dessert.

**Dinner:** 18:00 - 20:00 - Hot dinner with two choices/vegetarian option and salad bar/dessert.

## Facilities

**Sports:** Sports include badminton, basketball and table tennis. The sports hall is used as part of the activity programme and must be supervised by an Activity Leader.

**Other:** A stunning picture gallery and historic chapel are housed within the world-famous Founder's Building. Social spaces are available within the

## Sample Programme\*

	Morning	Afternoon	Evening
<b>Day 1</b>	Arrivals	Arrivals	Campus tour and ice-breaker activities
<b>Day 2</b>	Football Coaching	Placement Test and Lesson 1	On-site Activities
<b>Day 3</b>	Full day excursion to Brighton by coach	Unlimited Rides Wristband to use at Brighton Pier	On-site Activities
<b>Day 4</b>	Lesson 2	Lesson 3	Welcome Disco
<b>Day 5</b>	Football Coaching	Lesson 4	Football Seminar
<b>Day 6</b>	Football Coaching	Lesson 5	On-site Activities
<b>Day 7</b>	Full day excursion to London with Politics and Royalty walking tour	Entrance to Wembley Stadium*	Themed Disco
<b>Day 8</b>	Lesson 6	Football Coaching	International Evening
<b>Day 9</b>	Lesson 7	Full day excursion to London with entrance to Tottenham Hotspur Stadium*	Sunset Boat Disco on the River Thames
<b>Day 10</b>	Half day excursion to Windsor with entrance to Windsor Castle	Football Coaching	Karaoke/Lip Sync Battle
<b>Day 11</b>	Lesson 8	Lesson 9	Talent Show
<b>Day 12</b>	Lesson 10	Football Coaching	Football Seminar and Farewell Disco
<b>Day 13</b>	Football Coaching	Football Coaching	On-site Activities
<b>Day 14</b>	Full day excursion to Thorpe Park	Full day excursion to Thorpe Park	On-site Activities
<b>Day 15</b>	Departures	Departures	Departures

\*Activities are sample only, can change depending on the length of the programme \*\*Subject to availability



Students Union such as Tommy's Bar.

## Computer Access

Students are issued with a Wi-Fi code on arrival. There is also a computer centre on site, which is available to Group Leaders all day, and to students as a designated evening activity.

## Laundry

Located in The Hub main reception, and open until late each night. Washing powder can be purchased in the laundry room. Students must be accompanied by a member or staff. Bed linen will be washed once a week by the University. Refer to the Welfare Manager for exact details. All students should bring towels and toiletries.

## Security

The university has a 24-hour on-site security team, who maintain a patrol. There is also campus-wide CCTV. All rooms have secure keycard entry. No safes in the bedrooms. The Centre Manager has a safe in their office, and this can be used by students to store money/passports securely. Damage deposits of £25 or €30 will be collected.

## Health Care

**Hospital:** St. Peter's Hospital, Guildford Road, Chertsey, KT16 0PJ  
**Doctors' Surgery:** based within the University itself, as there is a medical centre within Founder's Building. This is open 09:00 - 17:00 Monday to Friday.

**Pharmacy:** Boots Chemist, Egham High Street, Egham

